



## Installation Instructions

### Size 4 Distance Marker Signs

— DO NOT DISCARD —  
Important information for AIRPORT MAINTENANCE DEPT

#### To install:

1. Locate the power cord (#1). It will be visible protruding from the power leg slipfitter aluminum column and coupling.

**Note: in a typical remote L867 base can installation, the sign leg is connected to the remote can with 2" rigid galvanized steel (RGS) conduit. An isolation transformer secondary extension cord (#3) is fed through the conduit and connects the sign power cord plug to the isolation transformer secondary plug.**

2. Locate the cable clamp (#4, provided with the sign for most new sign installations). Tighten the cable clamp (#4) onto the isolation transformer secondary extension cord female plug at grade level. The cable clamp should nest on the under side of the floor flange (#2) and on top of the conduit (#5) that is flush with the surface of the concrete mounting pad. Insert the power cord plug (male) into the isolating transformer secondary extension cord plug (female).

**Note: As required by the FAA, this ensures that the power cord will be disconnected/unplugged in the event that the sign is knocked over.**

3. Lift the sign upright into place on the cement pad. Use the sign as a template to locate and mark mounting holes. Place sign off to one side and install anchor bolts. Recommended anchor bolts: 5/8" x 5" for mode 2 & 3 signs. Position sign over the anchor bolts and fasten the floor flanges to the cement pad with lockwashers and nuts.

4. Electrical adjustments are now required. Power supply settings have been factory set but must be rechecked with an RMS meter once installed in the airfield environment. Please refer to the "Parts & Electrical Information" sheet for the lighting system being installed. Follow the "Installation" portion of those directions to ensure that the electrical settings are correct.

5. Replace any covers or access doors that had been removed.

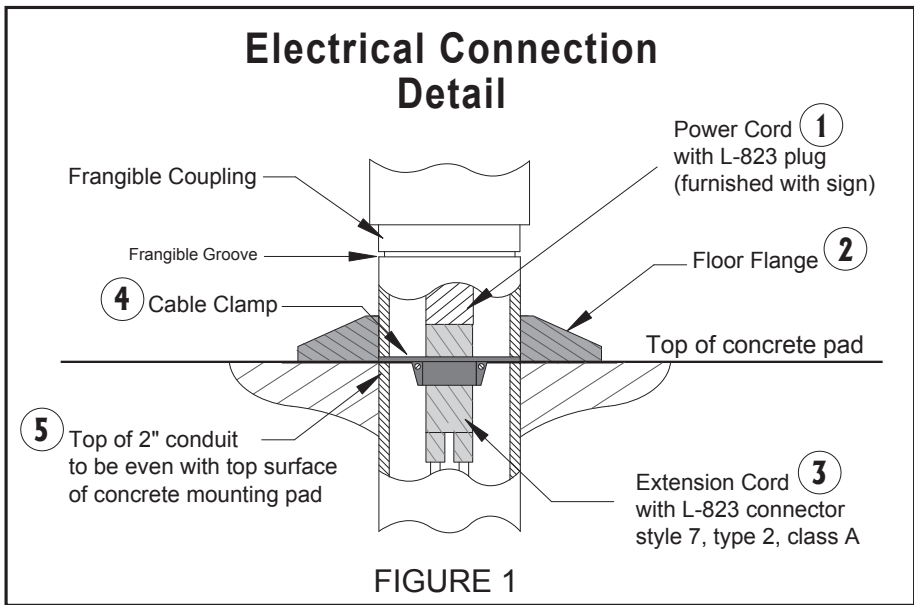
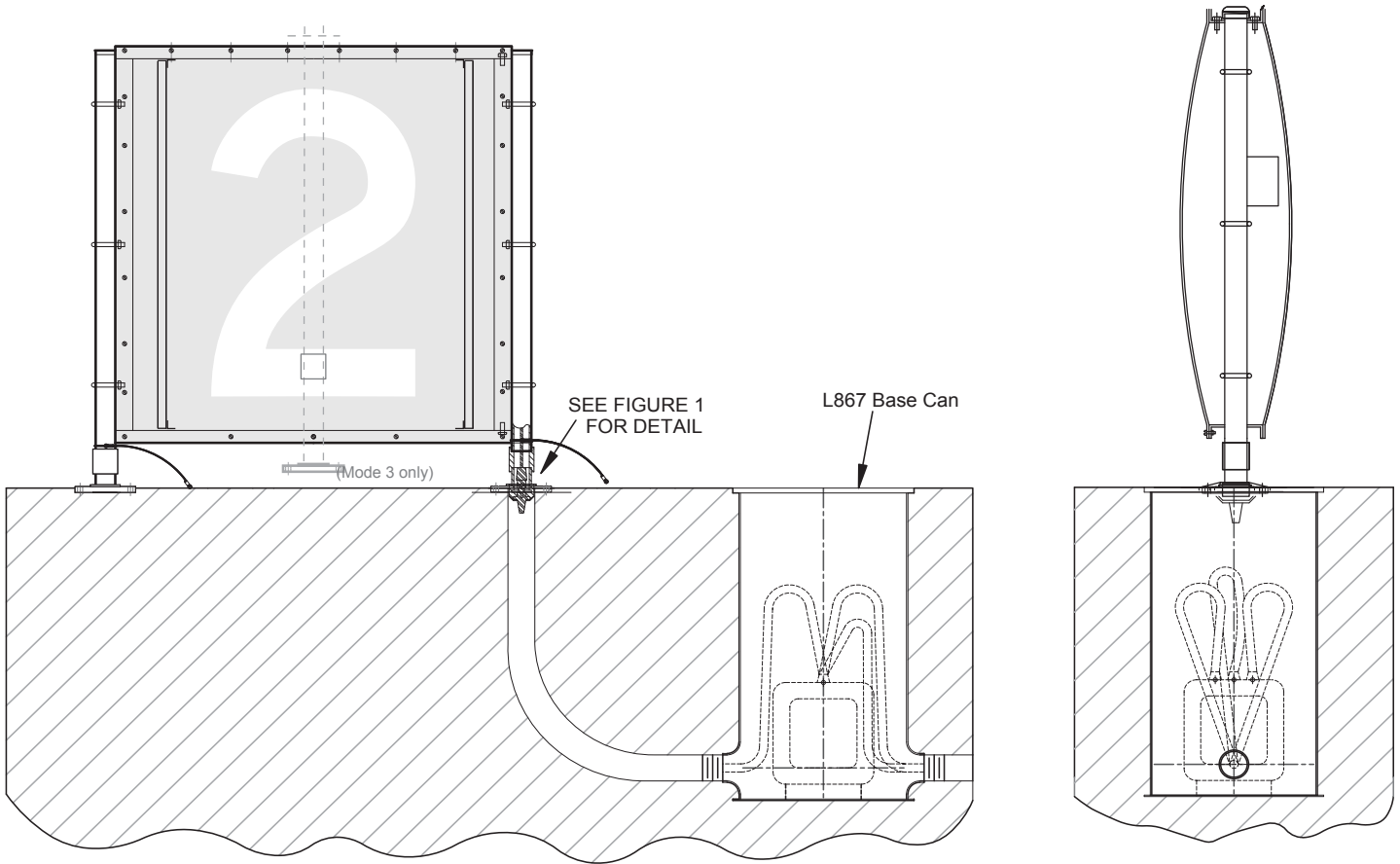
---

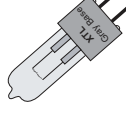
#### LUMACURVE AIRFIELD SIGNS

9115 Freeway Drive, Macedonia, OH 44056

Phone: 800.258.1997 / 330.467.2030

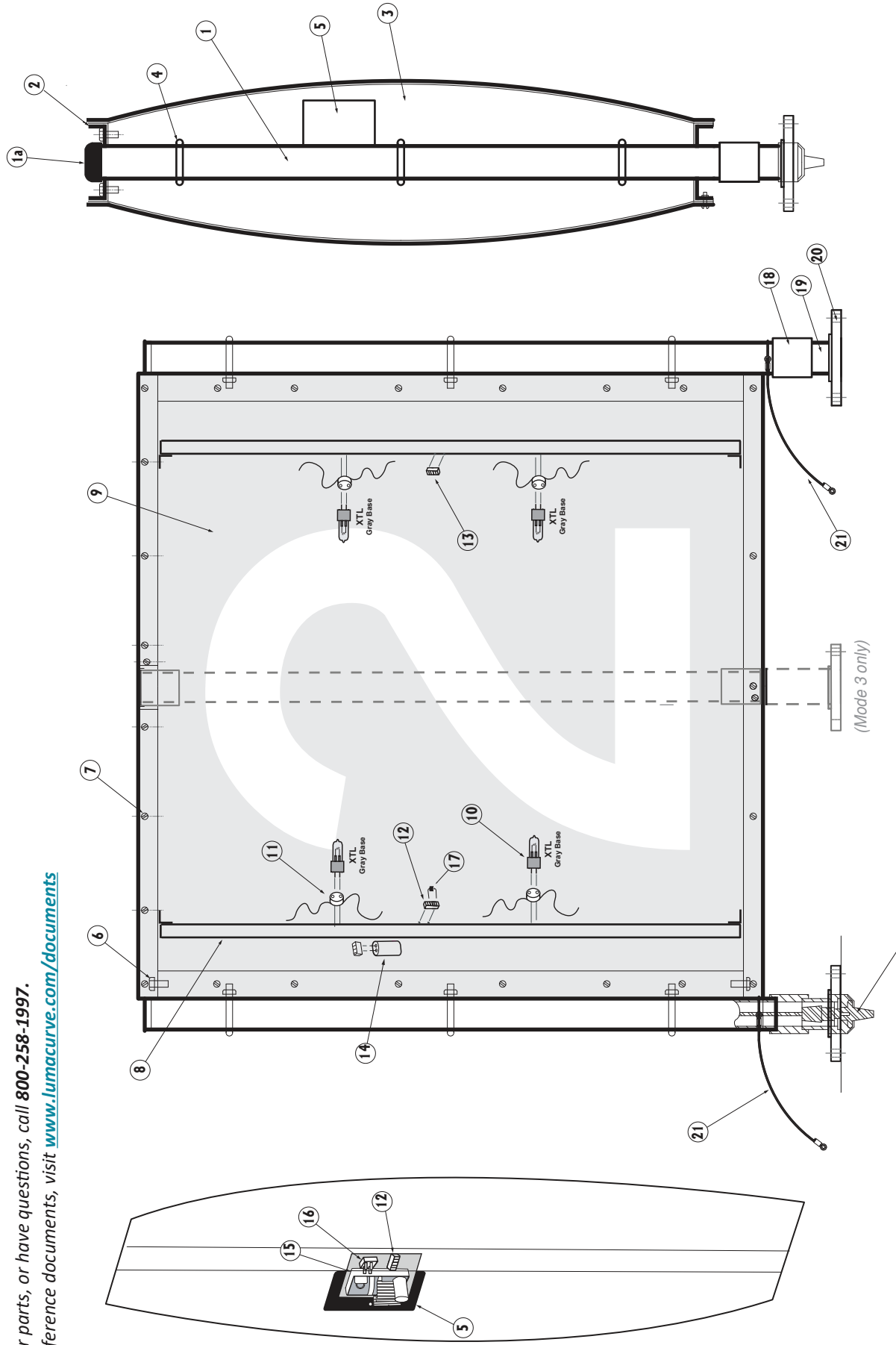
[www.lumacurve.com](http://www.lumacurve.com)

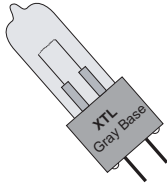




To order parts, or have questions, call 800-258-1997.

View reference documents, visit [www.lumacurve.com/documents](http://www.lumacurve.com/documents)





# LUMACURVE PARTS LIST

## Size 4, Distance Remaining Sign XTL Lighting Systems

(Gray Base 10V/20W quartz halogen lamps)

### XTL Lighting System

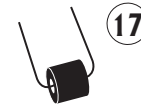
	<i>Item</i>	<i>Description</i>
1a.	DCLT-1A	Leg Cap
* 1.	D-1	Leg
2.	D-2	Top/Bottom Channel
3.	DTG-2	End Panel
* 4.	D-4AB	U-Bolts w/ nuts & washers
5.	D-4ABC	Access Door (handle on power side)
6.	210/220/230/232	1/4" Hardware
7.	394	1/4" x 3/4" Hex Head
8.	D8P	Light Bar Channel (Vertical)
9.	D-15	48" x 48" legend panel
10.	XTL Quartz	XTL 10V/20W Lamp
11.	E400A	XTL Socket
12.	420	Terminal Strip (6 block)
13.	420	Terminal Strip (2 block)
14.	E611	Capacitor for E610 (2 required)
15.	E610	PCB Controller, 75V (1-8 lamps)
16.	E540	Bridge Rectifier 35A/1000V
17.	E416	Surge Protector
18.	2" Al Coupling	2" Pipe Coupling
* 19.	140A	Frangible Coupling-2600 ft/lbs
* 20.	15-XHDT	5" x 8" Aluminum Floor Flange
21.	190-3/16"	Tether
22.	430	Cord & Plug
25.	480	Cable Clamp

**Certified to current FAA Advisory Circular 150/5345-44**

Specification for Runway and Taxiway Signs

*View our Certificate of Conformance*

### Enlarged View



\*Mode 3 parts may be different or not listed.  
Please call for more information.

### LUMACURVE AIRFIELD SIGNS

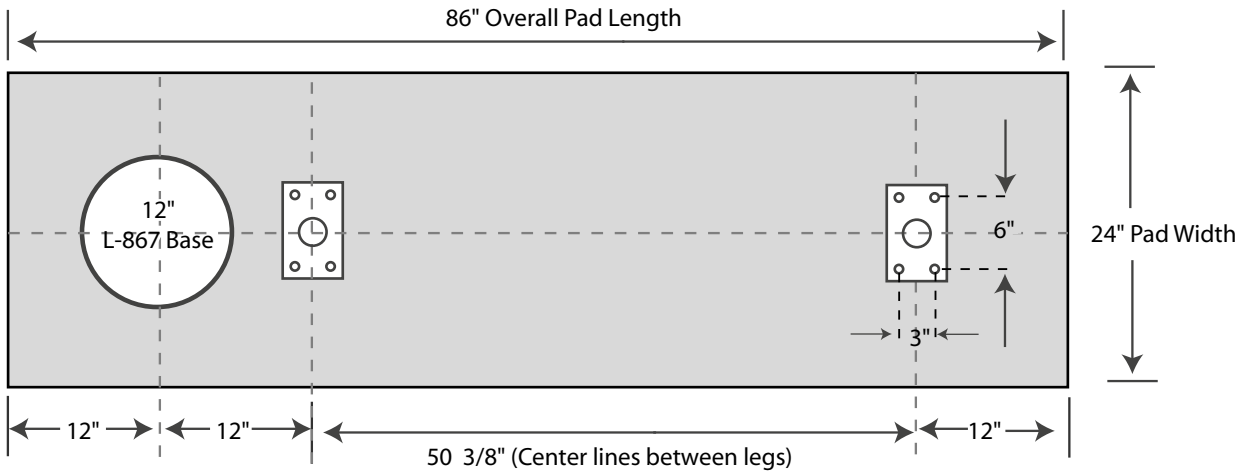
9115 Freeway Drive, Macedonia, OH 44056

Phone: 800.258.1997 / 330.467.2030

www.lumacurve.com

11/19  
f31.Parts\_XTL\_DM

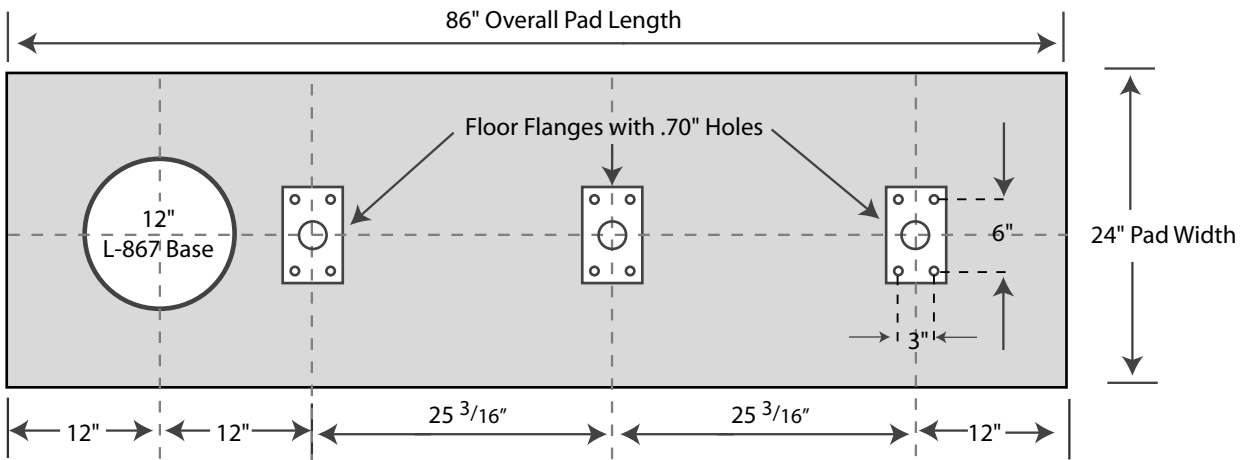
**MODE 2**



**Use 5/8" diameter anchor bolts for mounting to pad**

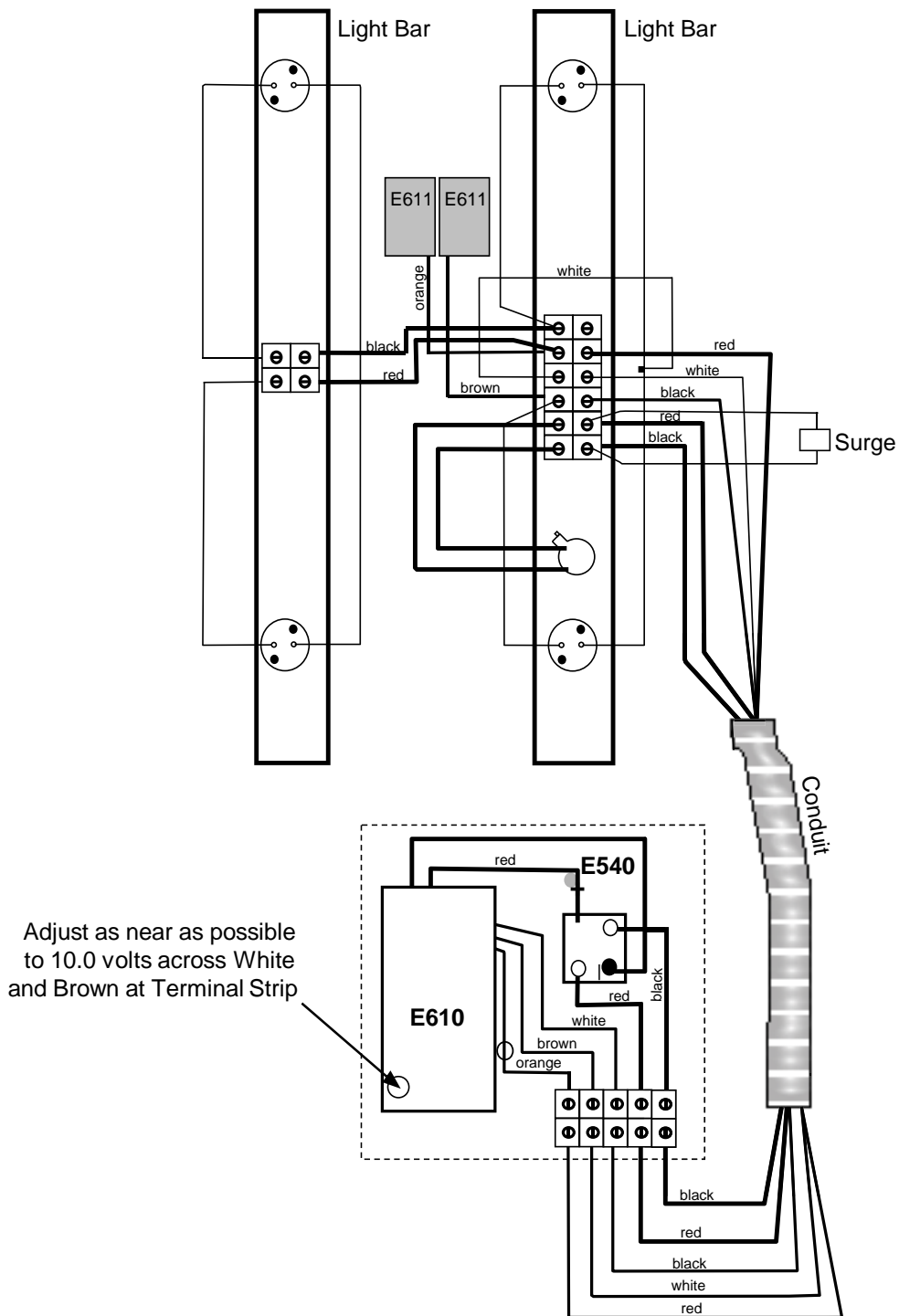
*When setting bolts, allow for approximately 3/4" flange thickness.*

**MODE 3**



**Use 5/8" diameter anchor bolts for mounting to pad**

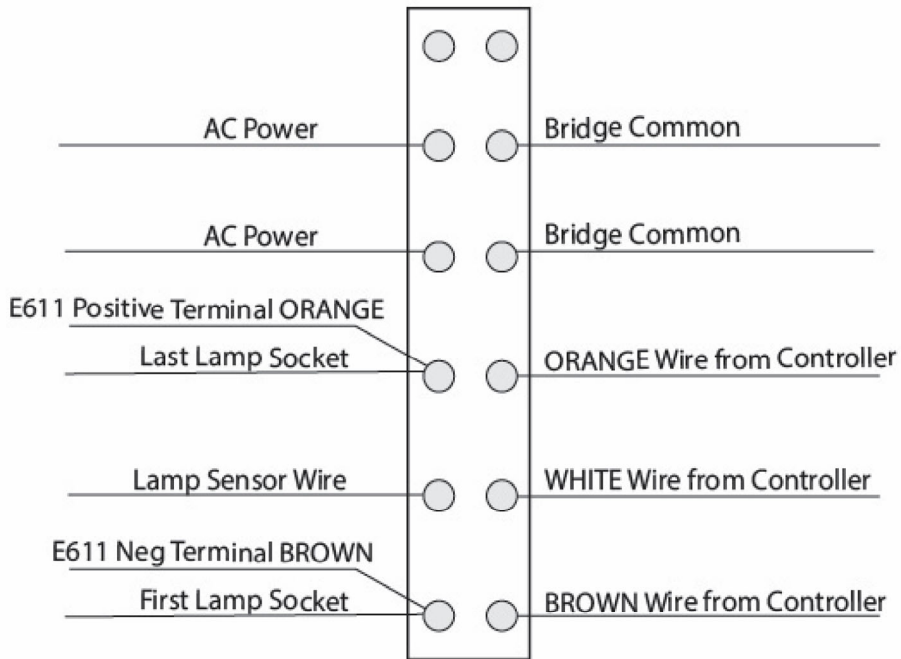
*When setting bolts, allow for approximately 3/4" flange thickness.*



**LUMACURVE AIRFIELD SIGNS**

9115 Freeway Drive, Macedonia, OH 44056  
Phone: 800.258.1997 / 330.467.2030  
www.lumacurve.com

### XTL Sign - NO SWITCH



### XTL Sign - SWITCH

