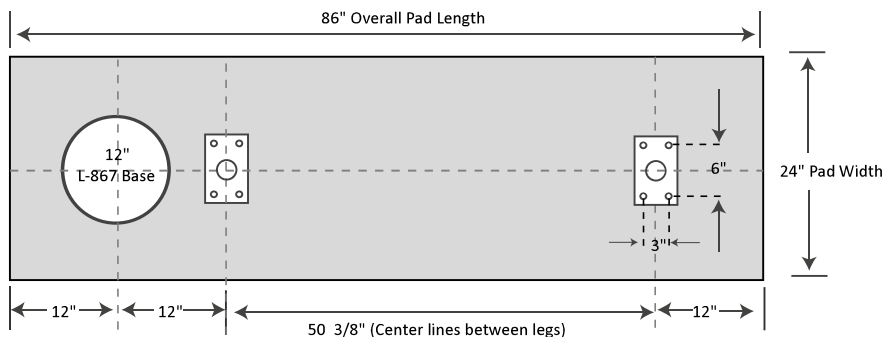




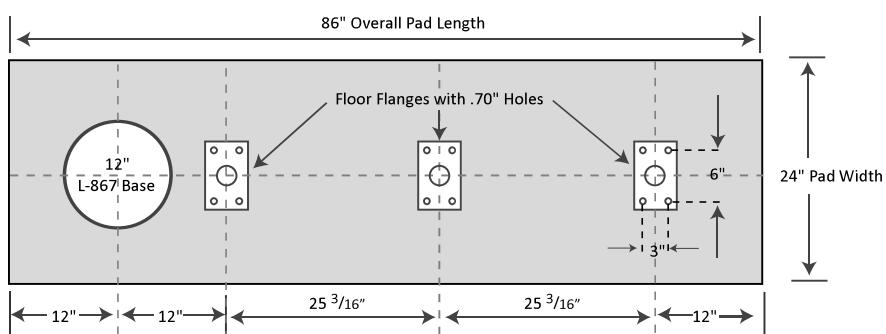
DISTANCE REMAINING SIGN
Pad Dimensions &
Mounting Locations

MODE 2



Use 5/8" diameter anchor bolts for mounting to pad
When setting bolts, allow for approximately 3/4" flange thickness.

MODE 3



Use 5/8" diameter anchor bolts for mounting to pad
When setting bolts, allow for approximately 3/4" flange thickness.

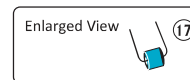


**DISTANCE REMAINING (SIZE 4)
XTL LIGHTING SYSTEM**
Parts List

To order parts, or have questions, call 800-258-1997.
View reference documents, visit www.lumacurve.com/documents

ITEM	DESCRIPTION
DCLT-1A	Leg Cap
D-1	Leg
D-2XHD	Top/Bottom Channel
DTG-2	End Panel
D-4/D-4AA/370/360	U-bolts w/ nuts & washers
D-3/D-3B	Access Door
215/220/230/232	1/4" Hardware
394 Face Hardware	1/4" x 3/4" Hex Head
D-8P	Light Bar (Vertical)
D-15	48" x 48" Legend Panel
XTL Quartz	XTL 10V/20W Lamp
E400A	XTL Socket
420	Terminal Strip
420	Terminal Strip (section)
E611	Capacitor for E610 (2 required)
E610	PCB Controller, 75V (1-8 Lamps)

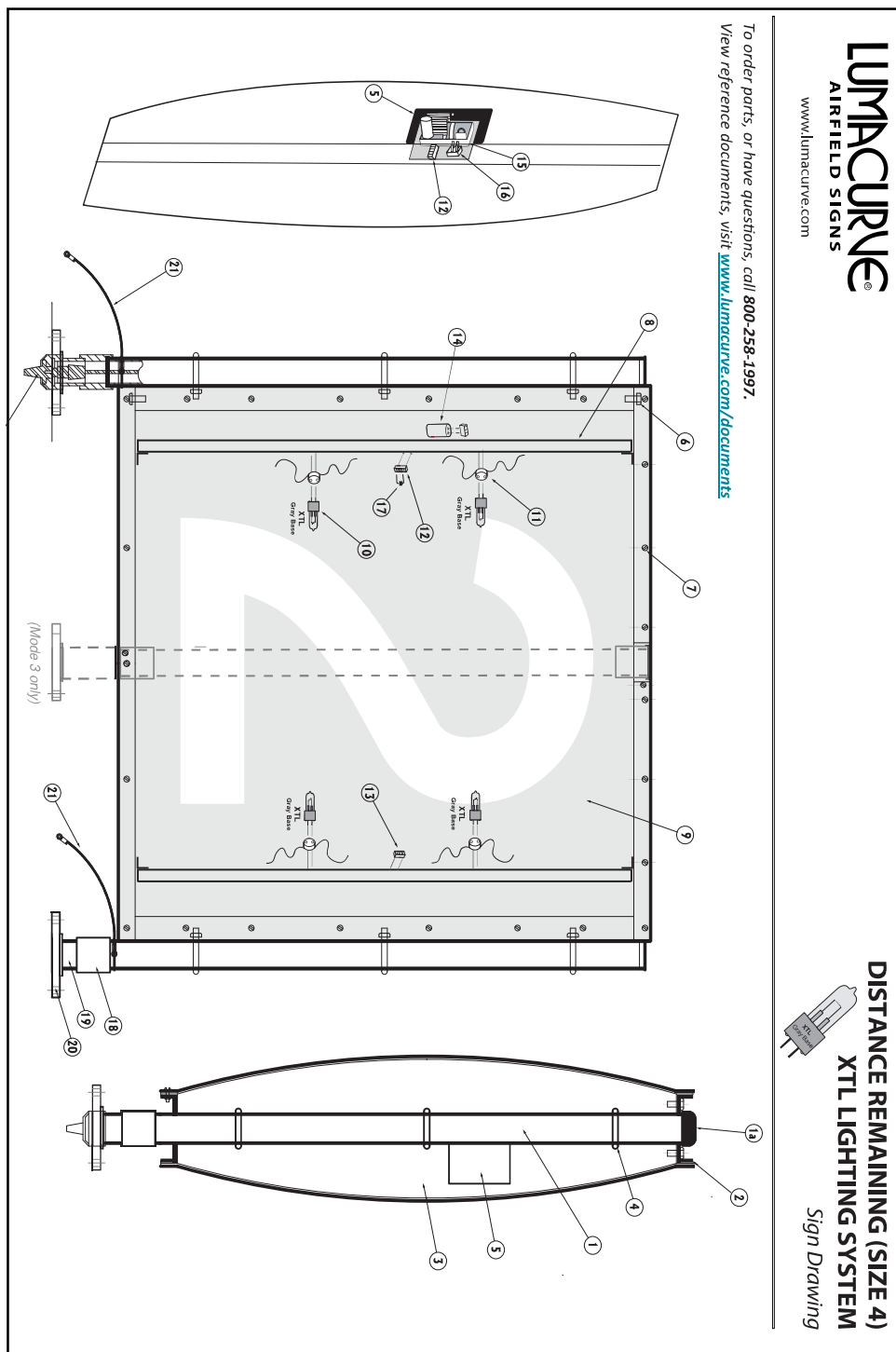
ITEM	DESCRIPTION	
16.	E540	Bridge Rectifier 35A/1000V
17.	E416	Surge Protector
*18.	2" AL Coupling	2" Pipe Coupling
*19.	140A	Frangle Coupling - 2600 ft/lbs
20.	15-XHDT	5" x8" Aluminum Floor Flange
21.	190 - 3/16"	Tether
22.	430	Cord & Plug
25.	480	Cable Clamp



* Mode 3 parts may be different or not listed here
Please see the DM MODE 3 parts list

To help in placing your order:

- Specify one of the following sign types:
L-858Y ("Y"ellow), L-858R ("R"ed), L-858L ("L"ocation), or Blank/ Black
- Specify one of the following track colors:
(B) Black, (Y) Yellow or (R) Red



To order parts, or have questions, call 800-258-1997.
View reference documents, visit www.lumacurve.com/documents



DISTANCE REMAINING SIGN
Installing Panels

The purpose of this guide is to help contractors and airfield personnel remove old and install new Size 4 Distance Marker Sign Panels.

28 HOLE INSTALLATION: (Signs manufactured after 12/15/12)

CAUTION: Excessive downward force applied to the attachment screws can strip the fiberglass sign frame both during panel removal and during panel installation.

- Carefully remove existing sign panel screws from the sign (do NOT strip fiberglass sign frame).
- Remove panel.
- Align the removed panel on top of the new panel.
- Use the removed panel as a template and mark each hole location (28).
- Pre-drill 28 holes in the new panel using a 17/64" drill bit.
- Position the new panel on the sign frame.
- Use a carefully selected torque setting to reinstall existing screws (28).

24 HOLE INSTALLATION: (Signs manufactured before 12/15/12)

CAUTION: Excessive downward force applied to the attachment screws can strip the fiberglass sign frame both during panel removal and during panel installation.

- Carefully remove existing sign panel screws from the sign (do NOT strip fiberglass sign frame).
- Remove panel.
- Align the removed panel on top of the new panel.
- Use the removed panel as a template and mark each hole location (24).
- Pre-drill 24 holes in the new panel using a 13/64" drill bit.
- Position the new panel on the sign frame.
- Use a carefully selected torque setting to reinstall existing screws (24).

NOTE: If a hole in the fiberglass sign frame becomes stripped, drill a larger hole (3/16") in the corresponding location on the replacement panel, then use a larger screw to secure the panel to the sign frame. #10 screws are provided as original sign equipment. #12 screws are recommended as up-sized replacements in the event of stripped fiberglass sign frame.

DO NOT DISCARD
Important information for AIRPORT MAINTENANCE DEPT

To install:

1. Locate the power cord (#1). It will be visible protruding from the power leg slipfitter aluminum column and coupling.

Note: in a typical remote L867 base can installation, the sign leg is connected to the remote can with 2" rigid galvanized steel (RGS) conduit. An isolation transformer secondary extension cord (#3) is fed through the conduit and connects the sign power cord plug to the isolation transformer secondary plug.

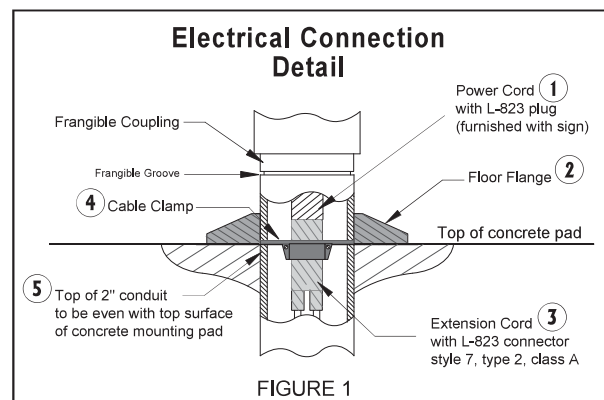
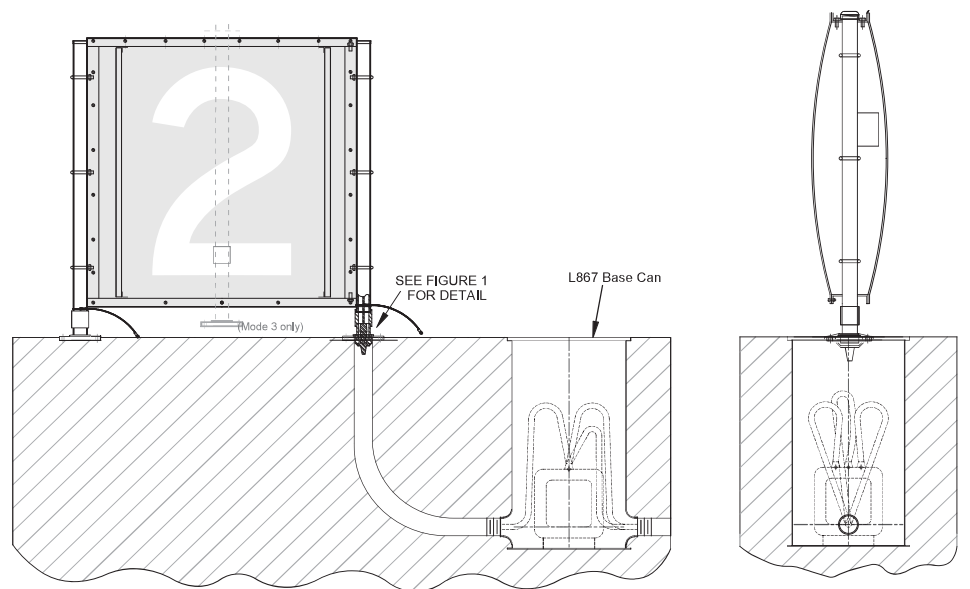
2. Locate the cable clamp (#4, provided with the sign for most new sign installations). Tighten the cable clamp (#4) onto the isolation transformer secondary extension cord female plug at grade level. The cable clamp should nest on the under side of the floor flange (#2) and on top of the conduit (#5) that is flush with the surface of the concrete mounting pad. Insert the power cord plug (male) into the isolating transformer secondary extension cord plug (female).

Note: As required by the FAA, this ensures that the power cord will be disconnected/unplugged in the event that the sign is knocked over.

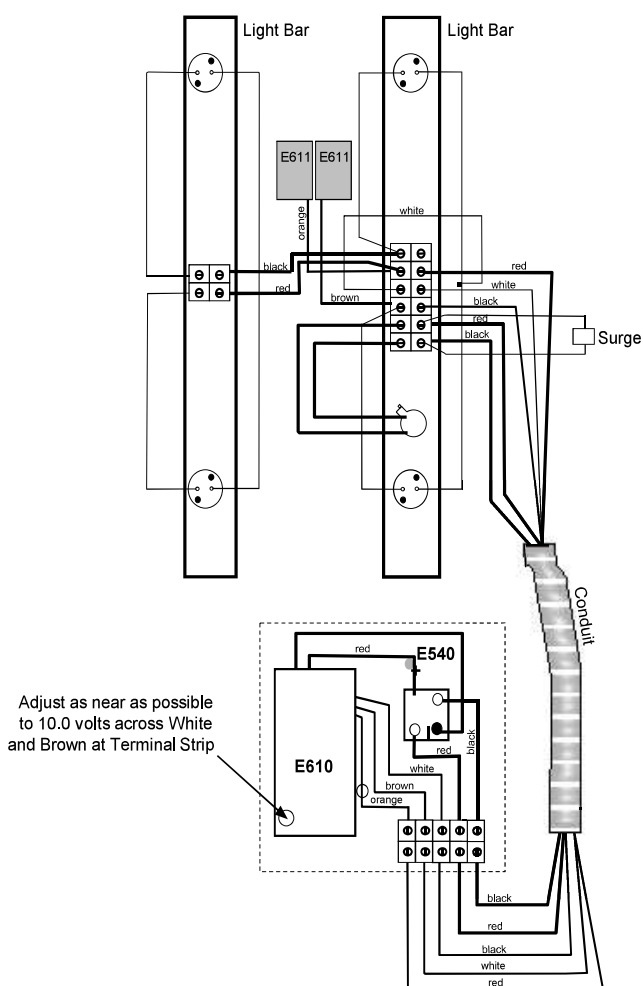
3. Lift the sign upright into place on the cement pad. Use the sign as a template to locate and mark mounting holes. Place sign off to one side and install anchor bolts. Recommended anchor bolts: 5/8" x 5" for mode 2 & 3 signs. Position sign over the anchor bolts and fasten the floor flanges to the cement pad with lockwashers and nuts.

4. Electrical adjustments are now required. Power supply settings have been factory set but must be rechecked with an RMS meter once installed in the airfield environment. Please refer to the "Parts & Electrical Information" sheet for the lighting system being installed. Follow the "Installation" portion of those directions to ensure that the electrical settings are correct.

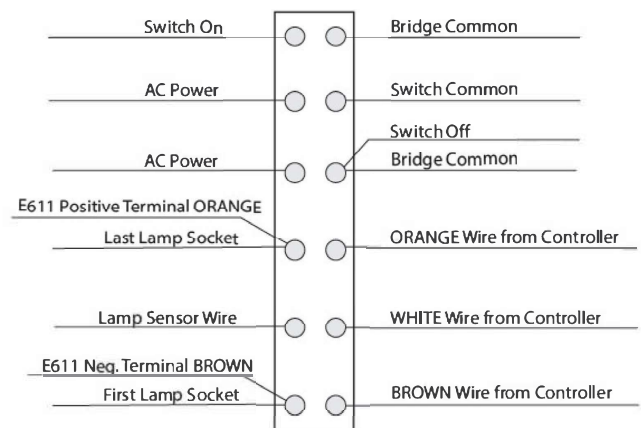
5. Replace any covers or access doors that had been removed.



**Distance Remaining Sign (Size 4)
XTL (Style 2 & 3) Wiring System**



XTL Sign - SWITCH



XTL Sign - NO SWITCH

