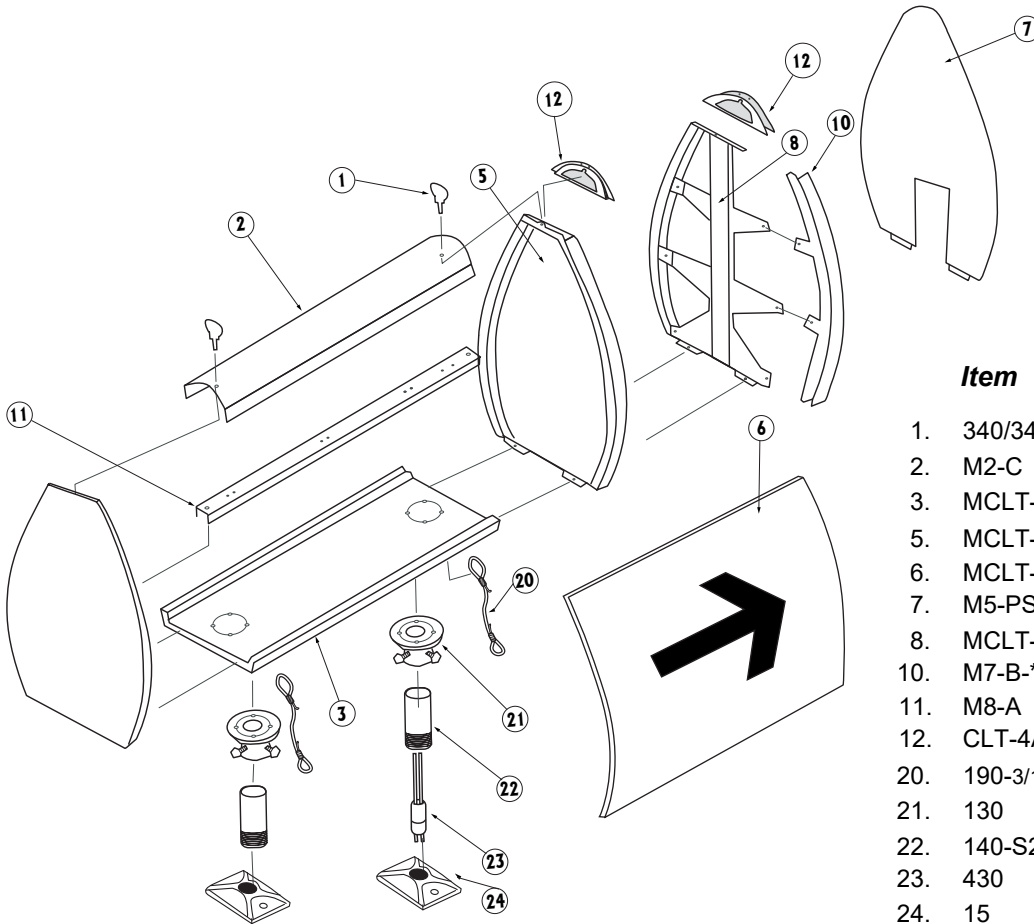




SIZE 2 SIGN, MODE 3

Parts List

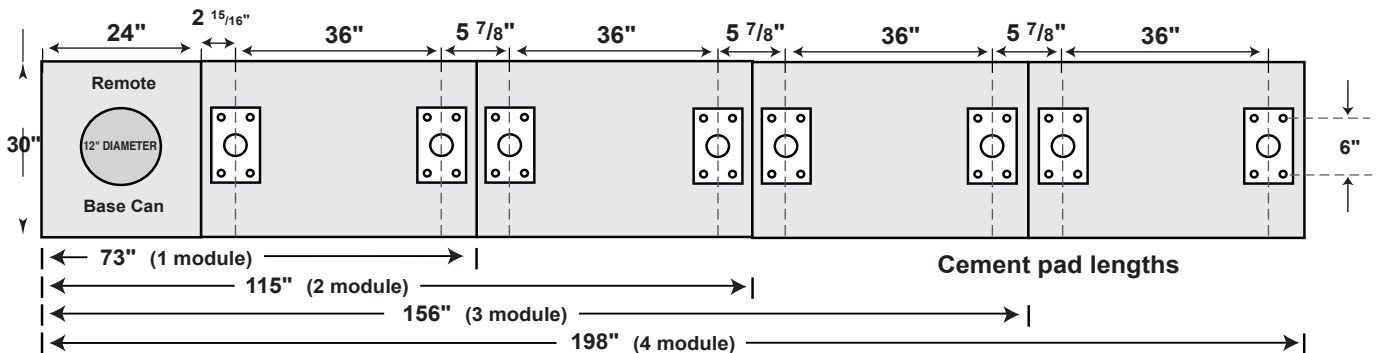


Item	Description
1.	340/345 Turn Fastener/Retainer
2.	M2-C Performance Top
3.	MCLT-3* Base
5.	MCLT-4 End Panel
6.	MCLT-5* Legend Panel
7.	M5-PS Full Length Panel Spacers Inserts
8.	MCLT-6 Multi-Module Insert (Tree)
10.	M7-B** Face Insert Channel
11.	M8-A Light Bar
12.	CLT-4AC Adapter casting^
20.	190-3/16" assm Tether (2 per module)
21.	130 Slip-fitter
22.	140-S2M3 6" Frangible Coupling
23.	430 Cord & Plug
24.	15 5" x 8" Aluminum Floor Flange

MODE 3 INSTALLATION

SIZE Medium - FAA SIZE 2 (15" LETTERS)

Mounting hole center lines
 (Outer Mount Only)



Above references recommended cement pad dimensions and mounting bolt locations for Lumacurve signs

Recommended concrete thickness : 6"-8"

Recommended anchor bolts: Size 1 & 2: 1/2" x 5" - Size 3 & 5: 5/8" x 5"

* Must indicate Mode 3 when ordering

** Replace with color track needed

^ Must indicate number of modules when ordering

LUMACURVE AIRFIELD SIGNS

9115 Freeway Dr., Macedonia, OH 44056
 800-258-1997 www.lumacurve.com