

Parts & Electrical Information

XTL lighting systems (gray base bulbs)

Certified to current FAA Advisory Circular 150/5345-44
Specification for Runway and Taxiway Signs

LUMACURVE XTL System

The LUMACURVE XTL system maintains a constant sign brightness in accordance with FAA A/C 150-5345-44 with appreciably higher efficiency relative to traditional lighting systems, and is available in new signs or in kit form for retrofit. This system ensures delivery of a constant voltage to the 10V 20W halogen lamps at all constant current regulator (CCR) current steps without internal modification (true for both high (2.8A - 6.6A) and medium (4.8A - 6.6A) intensity circuits.) The lamps authorized for use in this system are Standard Signs, Inc. P/N # "XTL Quartz" with 10v/20w Bipin quartz halogen lamp & custom ceramic adapter base. They are available directly from Standard Signs, Inc.

Important: *The LUMACURVE XTL lighting system is designed exclusively for FAA styles 2 & 3 operation on a series circuit together with non-sign fixtures, such as edge lights, where the sign brightness control components are necessary to maintain constant sign brightness regardless of CCR step. Non-sign load must be present on the circuit for proper operation of this system. XTL Signs should NOT be installed on a circuit that powers only signs. For circuits dedicated to signs, please request LUMACURVE lighting systems designed for FAA style 5 operation.*

DO NOT CHANGE LAMPS WITH SIGN ENERGIZED. A burned out lamp causes an E410/E610 controller to reach max power and exceed the lamps' rated voltage. Inserting a replacement lamp in an energized sign will shock the lamps and damage filaments.

Installation:

System lamp voltage is factory set but we recommend that one sign per CCR be spot checked with a DC voltmeter after installation. Lamp voltage is read across the white and brown leads at the sign terminal strip on the light bar (P/N #CLT 8A). If voltage varies from recommended settings (10.0 V for all size signs), all signs on that circuit should be checked and adjusted. To adjust, turn the small screw in the upper left corner of the printed circuit board (E410/E610) controller mounted on the inside of the end panel (P/N #CLT-4).

Note: *The adjustment screw is designed only for fine-tuning and does not function as a dimmer. Signs must not be operated at less than 9.5 volts.*

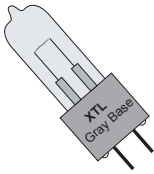
There is a 10-minute warm-up period for lamps to come to set voltage but sign brightness meets FAA specifications even at cold voltages.

STANDARD SIGNS, INC.

9115 Freeway Drive, Macedonia, OH 44056
Phone: 800.258.1997 / 330.467.2030 Fax: 330.467.2076
www.lumacurve.com

Copyright 2012 by STANDARD SIGNS, INC. ALL RIGHT RESERVED.

LUMACURVE PARTS LIST



XTL Lighting Systems

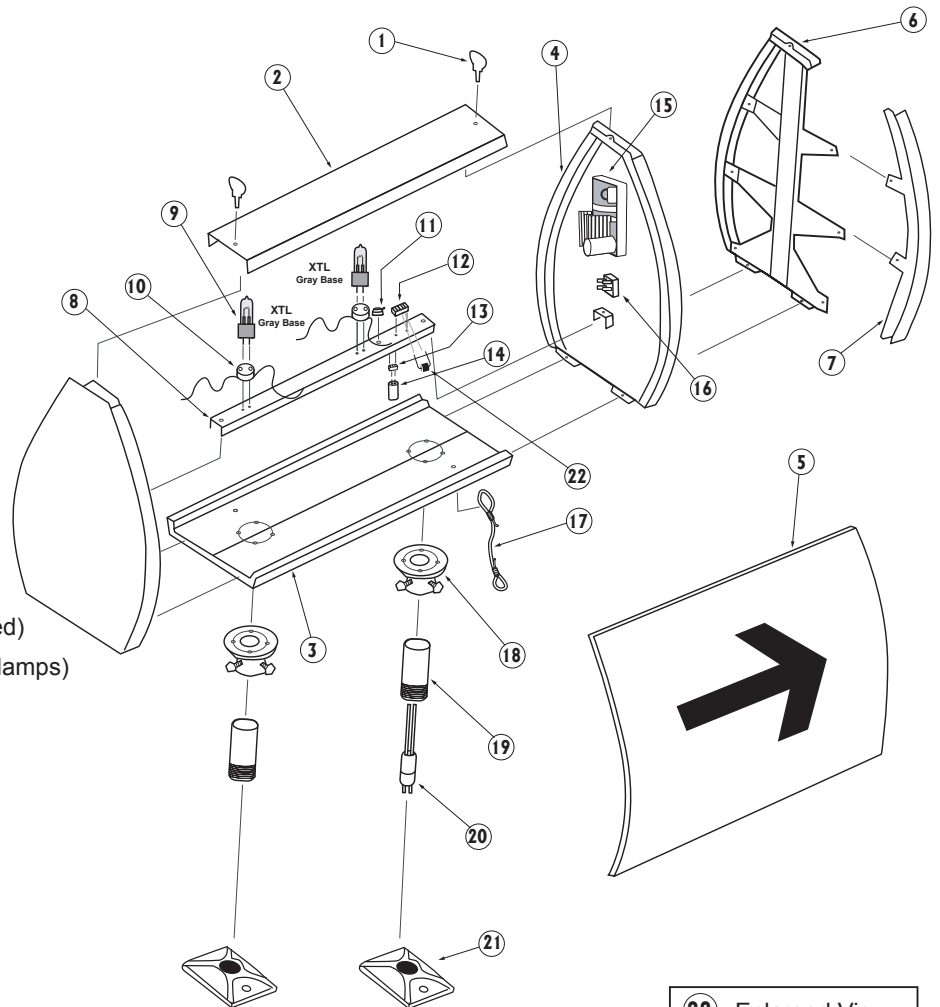
(Gray Base 10V/20W quartz halogen lamps)

Certified to current FAA Advisory Circular 150/5345-44

Specification for Runway and Taxiway Signs

View our FAA Certificate of Conformance

Item	Description
1. 340/345	Turn Fastener
2. *CLT-2	Cover
3. *CLT-3	Base
4. *CLT-4	End Panel
5. *CLT-5	Legend Panel ¹
6. *CLT-6	Multi-Module Insert (Tree)
7. *7-B	Face Insert Channel ² (Track)
8. *8-A	Light Bar
9. XTL Quartz	XTL 10V/20W Quartz Lamp
10. E400A	Lampholder
11. 480	Cable Clamp
12. 420	Terminal Strip
13. 420	Terminal Strip (section)
14B. E611	Capacitor for E610 (2 required)
15B. E610	PCB Controller, 75 Volt (1-8 lamps)
16. E540	Bridge Rectifier 35A/1000V
17. 190-3/16"	Tether
18. 130	Slipfitter
19. *140	6" Frangible Coupling
20. 430	Cord & Plug
21. 15	Floor Flange
22. E416	Surge Protector



One lamp systems only require:

E550 Resistor 3 OHM 25w (and mounting brackets)

22 Enlarged View
E416 Surge



To help in placing your order:

*Prefix part number with one of the following sign sizes: "S" (small/ size 1), "M" (medium/ size 2), "L" (large/ size 3 & 5)

¹ Specify one of the following sign types: L-858Y ("Y"ellow), L-858R ("R"ed), L-858L ("L"ocation), or Blank/ Black

² Specify one of the following track colors: (B) Black, (Y) Yellow or (R) Red

LUMACURVE AIRFIELD SIGNS

9115 Freeway Drive, Macedonia, OH 44056

Phone: 800.258.1997 / 330.467.2030 Fax: 330.467.2076

www.lumacurve.com