



Installation Instructions

for Taxiway & Runway Signs

Size 1, Size 2, Size 3 & Size 5

DO NOT DISCARD

Important information for AIRPORT MAINTENANCE DEPT

To install:

1. Locate the frangible couplings (item #1 see Electrical Connection Detail on page 2) and floor flanges (#2) that are provided with the sign. (For small sign orders, they may be packaged in the box with the sign. Larger order will have a separate carton containing this hardware.) Coat the threads of the frangible couplings with an anti-sieze compound or petroleum jelly, then screw them hand tight into the floor flanges.

Note: It is also important that the correct couplings be used with the sign. The coupling size and mode are etched on the outside of the coupling. Incorrectly sized couplings will not meet FAA frangibility requirements.

2. Locate the power cord (#4). It will be visible protruding from the power leg slip fitter.

Note: the power cord and electrical components are located in the module nearest the nameplate on the end of the sign.

3. Slip the coupling/floor flange assemblies into each slip fitter (#3) on the bottom of the sign. Tighten the set screws (#5) just enough to hold them in place. Floor flanges must be oriented with mounting holes perpendicular to sign base. For the power cord leg, pull enough power cord slack from the sign to allow a connection with the isolation transformer secondary extension cord (#6).

Note: The power cord that is provided is extra long to allow exiting the sign through any leg desired.

Note: in a typical remote L867 base can installation, the sign leg is connected to the remote can with 2" rigid galvanized steel (RGS) conduit. An isolation transformer secondary extension cord (#6) is fed through the conduit and connects the sign power cord plug to the isolation transformer secondary plug.

4. Locate the cable clamp (#7, provided with the sign for most new sign installations). Tighten the cable clamp (#7) onto the isolation transformer secondary extension cord female plug at grade level. Ensure the cable clamp side labeled "TOP" is facing up. The cable clamp should nest on the under side of the floor flange (#2) and on top of the conduit (#8) that is flush with the surface of the concrete mounting pad. Insert the power cord plug (male) into the isolating transformer secondary extension cord plug (female).

Note: As required by the FAA, this step in conjunction with step 6 ensures that the power cord will be disconnected/unplugged in the event that the sign is knocked over.

LUMACURVE AIRFIELD SIGNS

9115 Freeway Drive, Macedonia, OH 44056
Phone: 800.258.1997 / 330.467.2030 Fax: 330.467.2076
www.lumacurve.com

To install (continued):

5. Lift the sign upright into place on the cement pad. Use the sign as a template to locate and mark mounting holes. Place sign off to one side and install anchor bolts. *Recommended anchor bolts: 3/8" x 5" for mode 2 signs, 1/2" x 5" for mode 3 signs.* Position sign over the anchor bolts and fasten the floor flanges to the cement pad with lockwashers and nuts. Temporarily loosen the slip fitter set screws (#5). With a pipe wrench, tighten the frangible couplings 1/4 - 1/2 turn into the Floor Flanges. (*Warning: Do not use the wrench above the shear groove.*) Ensure that the sign is level and the modules are aligned by sighting down the length of the tops. Tighten the slip fitter set screws using a socket wrench.

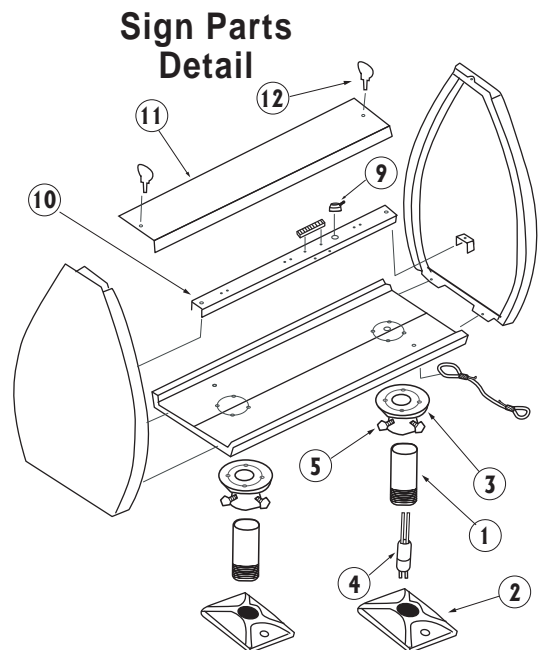
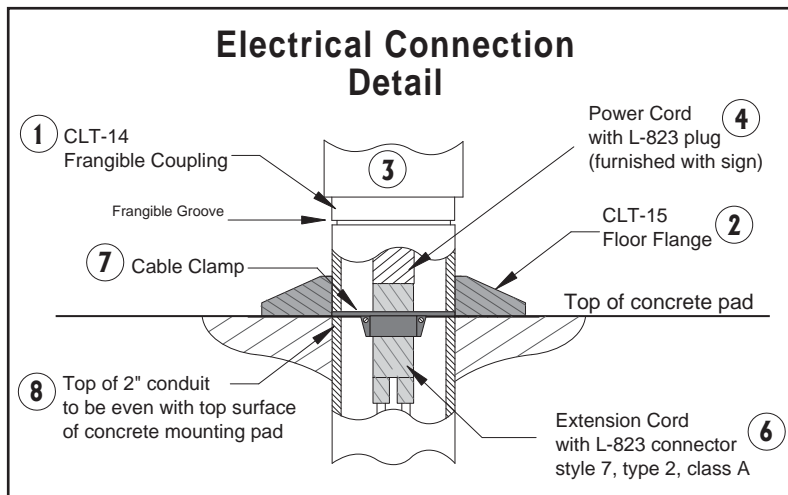
6. Locate the strain relief clamp (#9) on the inside of the sign. It can be found on the light bar (#10) on which the lamps are mounted. Remove the sign cover (#11) nearest to the nameplate on the end of the sign by unscrewing the two turn fasteners (#12) and slide out the legend panels. Remove all slack in the power cord between the plug and the strain relief clamp, then tighten the set screw on the strain relief clamp. Extra cord can be coiled & layed in the bottom of the sign. (*As required by the FAA, this step in conjunction with Step 4 ensures that the power cord will be disconnected/ unplugged in the event that the sign is knocked over.*)

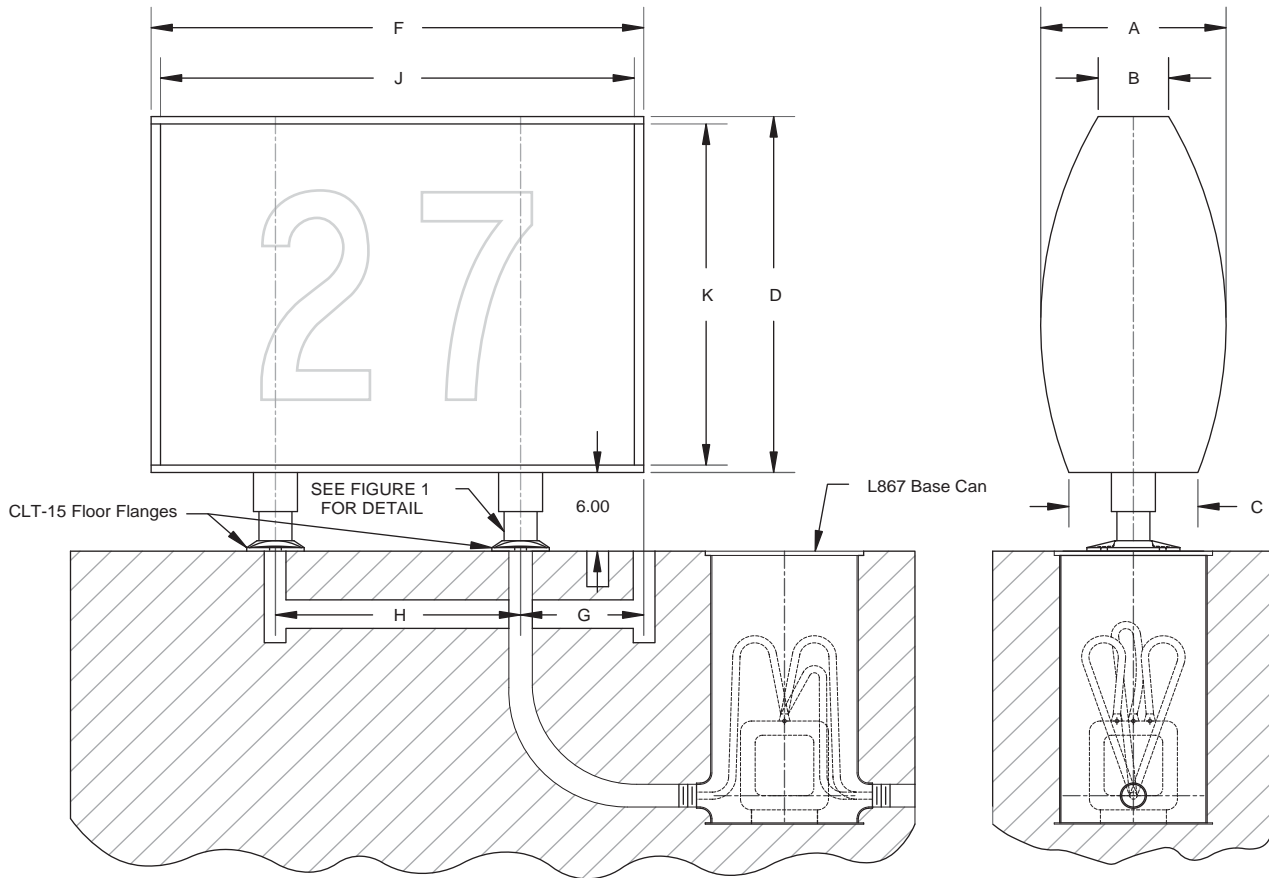
7. Electrical adjustments are now required. Power supply settings have been factory set but must be rechecked with an RMS meter once installed in the airfield environment. Please refer to the "Parts & Electrical Information" sheet for the lighting system being installed. Follow the "Installation" portion of those directions to ensure that the electrical settings are correct.

8. Replace any covers removed.

Note: sometimes legend panels seem to obstruct the re-installation of the top covers.

If panels are not engaging on the underside of the top cover into the gasketed channel, please try the following: Engage the turn fasteners loosely. With the palms of your hands, slap or "pop" the centers of the opposing panels inward simultaneously. The internal pressure should apply a force that allows the top to drop in to place. Apply pressure downward on the top. If the technique worked and the panels are engaged properly, the resistance (or obstruction) to tightening the turn fasteners should be eliminated.





| Size | 1 | 2 | 3 |
|------------|------------|------------|-------------|
| Letter Ht. | 12.0 (305) | 15.0 (381) | 18.0 (457) |
| Lamps | 1 | 2 | 2* |
| A | 13.2 (335) | 14.4 (366) | 15.8 (401) |
| B | 6.0 (152) | 6.0 (152) | 6.0 (152) |
| C | 11.0 (280) | 11.0 (280) | 11.0 (280) |
| D | 19.3 (490) | 25.3 (643) | 31.3 (795) |
| F | 29.4 (747) | 36.6 (930) | 42.0 (1067) |
| G | 7.4 (188) | 9.2 (234) | 10.6 (269) |
| H | 14.6 (371) | 18.2 (462) | 20.9 (531) |
| J | 27.8 (706) | 35.0 (889) | 40.4 (1026) |
| K | 18.0 (457) | 24.0 (610) | 30.0 (762) |

Note: Dimensions are in english with metric equivalents in parenthesis

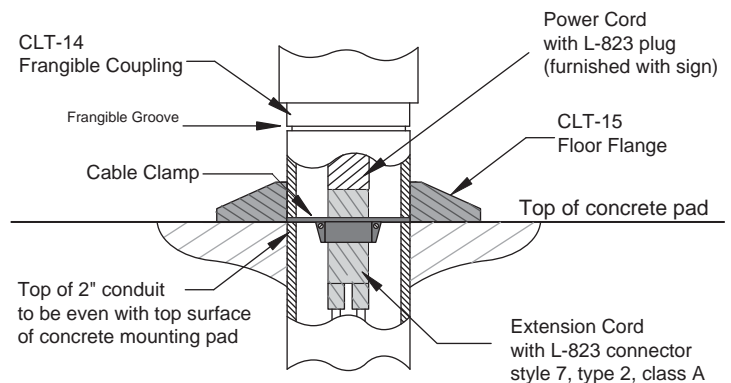


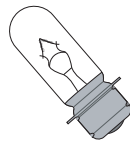
FIGURE 1

LUMACURVE AIRFIELD SIGNS

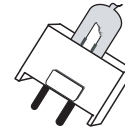
9115 Freeway Drive, Macedonia, OH 44056
Phone: 800.258.1997 / 330.467.2030 Fax: 330.467.2076
www.lumacurve.com

LUMACURVE PARTS LIST

Style 5 Lighting Systems

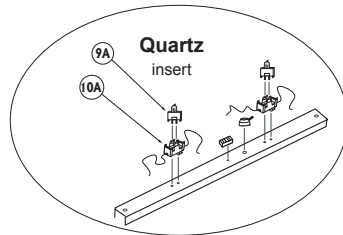


Incandescent
T10P 6.6A/45W lamps
(Shown below)

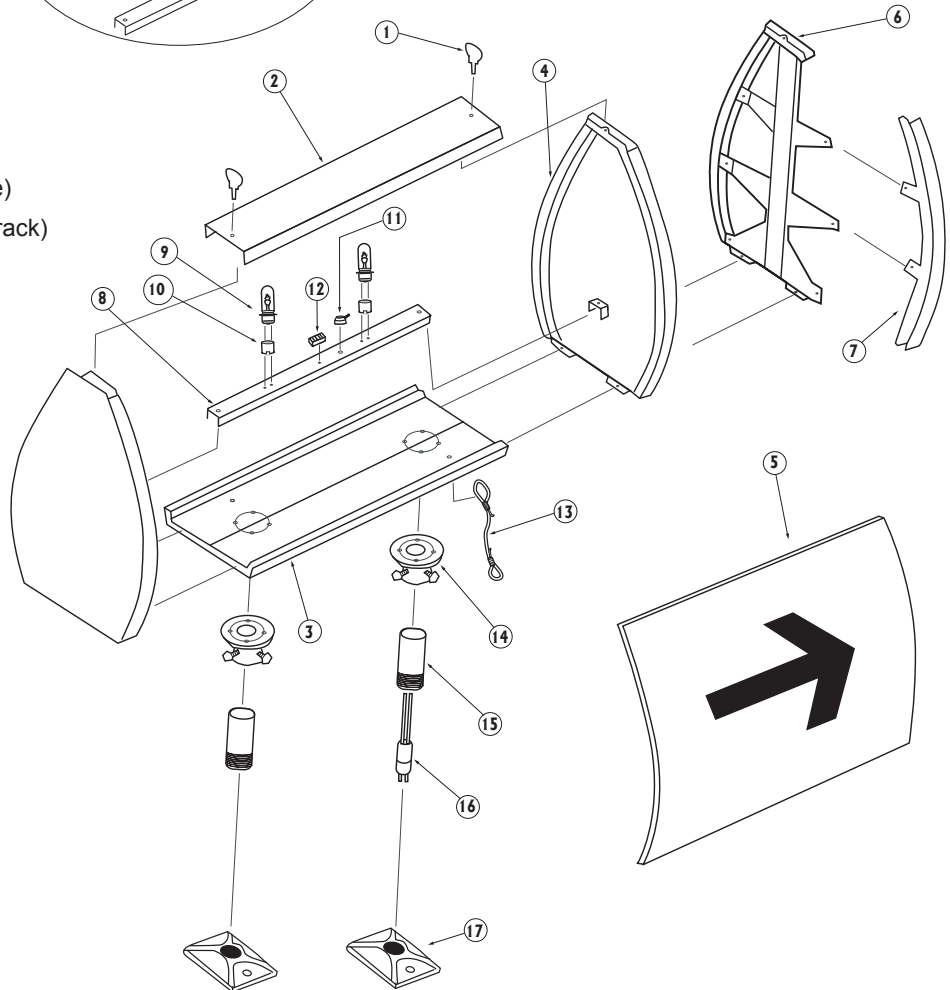


Quartz
45W/EXM lamps
(See Quartz insert)

Certified to current FAA Advisory Circular 150/5345-44
Specification for Runway and Taxiway Signs
View our FAA Certificate of Conformance



| Item | Description |
|------|---|
| 1. | 340/345 Turn Fasteners |
| 2. | *CLT-2 Cover |
| 3. | *CLT-3 Base |
| 4. | *CLT-4 End Panel |
| 5. | *CLT-5 Legend Panel ¹ |
| 6. | *CLT-6 Multi-Module Insert (Tree) |
| 7. | *7-B Face Insert Channel ² (Track) |
| 8. | *8-A Light Bar |
| 9. | 6.6/T10P 45W Incandescent Lamp |
| 9A. | 45W EXM 45W EXM Quartz Lamp |
| 10. | 400 Prefocus socket |
| 10A. | 501 Quartz socket |
| 11. | 480 Cable Clamp |
| 12. | 420 Terminal Strip (section) |
| 13. | 190-3/16" Tether |
| 14. | 130 Slipfitter |
| 15. | *140 6" Frangible Coupling |
| 16. | 430 Cord & Plug |
| 17. | 15 Floor Flange |



To help in placing your order:

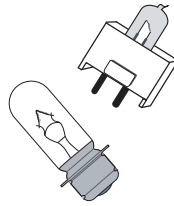
*Prefix part number with one of the following sign sizes: "S" (small/ size 1), "M" (medium/ size 2), "L" (large/ size 3 & 5)

¹ Specify one of the following sign types: L-858Y ("Y"ellow), L-858R ("R"ed), L-858L ("L"ocation), or Blank/ Black

² Specify one of the following track colors: (B) Black, (Y) Yellow or (R) Red

LUMACURVE AIRFIELD SIGNS

9115 Freeway Drive, Macedonia, OH 44056
Phone: 800.258.1997 / 330.467.2030 Fax: 330.467.2076
www.lumacurve.com



Parts & Electrical Information for Taxiway & Runway Signs

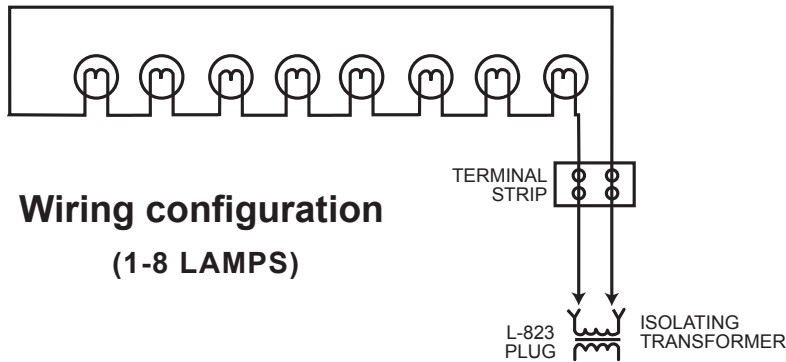
Style 5 lighting systems

T10P 6.6A/45W incandescent & 45W/EXM quartz lamps

Certified to current FAA Advisory Circular 150/5345-44

Specification for Runway and Taxiway Signs

View our FAA Certificate of Conformance



Style 5 signs are for operation on a constant 5.5A circuit and have no brightness control transformer installed.

| Traditional Lighting Systems Style 5 | | FAA Style 5 (Constant 5.5A) 45W/T10P | | | FAA Style 5 (Constant 5.5A) 45W EXM Qtz | | | |
|---|-------|---|-----------|--------------|--|-----------|--------------|-------|
| Sign Size & Module Length | Lamps | Isol Xfmr | Max VA | Pwr Factr | Isol Xfmr | Max VA | Pwr Factr | |
| Size 1, 1-mod | 1 | 45W | 33.8 | 0.992 | 45W | 38.1 | 0.993 | |
| | 2-mod | 2 | 100W | 62.6 | 0.983 | 100W | 67.4 | 0.986 |
| | 3-mod | 3 | 100W | 88.9 | 0.991 | 100W | 97.5 | 0.992 |
| | 4-mod | 4 | 200W | 122 | 0.993 | 200W | 128 | 0.993 |
| Size 2, 1-mod | 2 | 100W | 62.6 | 0.983 | 100W | 67.4 | 0.986 | |
| | 2-mod | 4 | 200W | 122 | 0.993 | 200W | 128 | 0.993 |
| | 3-mod | 6 | 200W | 175 | 0.987 | 200W | 178 | 0.984 |
| | 4-mod | 8 | 300W | 227 | 0.993 | 300W | 242 | 0.994 |
| Size 3, 1-mod | 2 | 100W | 62.6 | 0.983 | 100W | 67.4 | 0.986 | |
| | 2-mod | 4 | 200W | 122 | 0.993 | 200W | 128 | 0.993 |
| | 3-mod | 6 | 200W | 175 | 0.987 | 200W | 178 | 0.984 |
| | 4-mod | 8 | 300W | 227 | 0.993 | 300W | 242 | 0.994 |
| Size 5, 1-mod | 2 | 100W | 62.6 | 0.983 | 100W | 67.4 | 0.986 | |
| Size 4, 1-mod | 4 | 200W | 122 | 0.993 | 200W | 128 | 0.993 | |

LUMACURVE AIRFIELD SIGNS

9115 Freeway Drive, Macedonia, OH 44056
 Phone: 800.258.1997 / 330.467.2030 Fax: 330.467.2076
 www.lumacurve.com